



CERTIFICATE OF APPROPRIATENESS REVIEW FORM

Property Address: 627 Sycamore Street (07-OD-2024)
 Historic District: Old Decatur LHD
 Applicant: Jerrod Lukacs
 Proposed Work: Install gutters on façade and detached garage.

BUILDING HISTORY

According to the 2009 City-wide Historic Resource Survey, this 1900 two-story Colonial Revival is a contributing resource in the Old Decatur district. Architectural features include a wraparound porch, square posts and pilasters, shutters, and pedimented gables. Alterations include extending the brick chimney and adding an oval window to the front elevation in 2014. There have also been a number of additions to the residence since 1941, including a second story at the rear of the building. MARTA runs under this property.

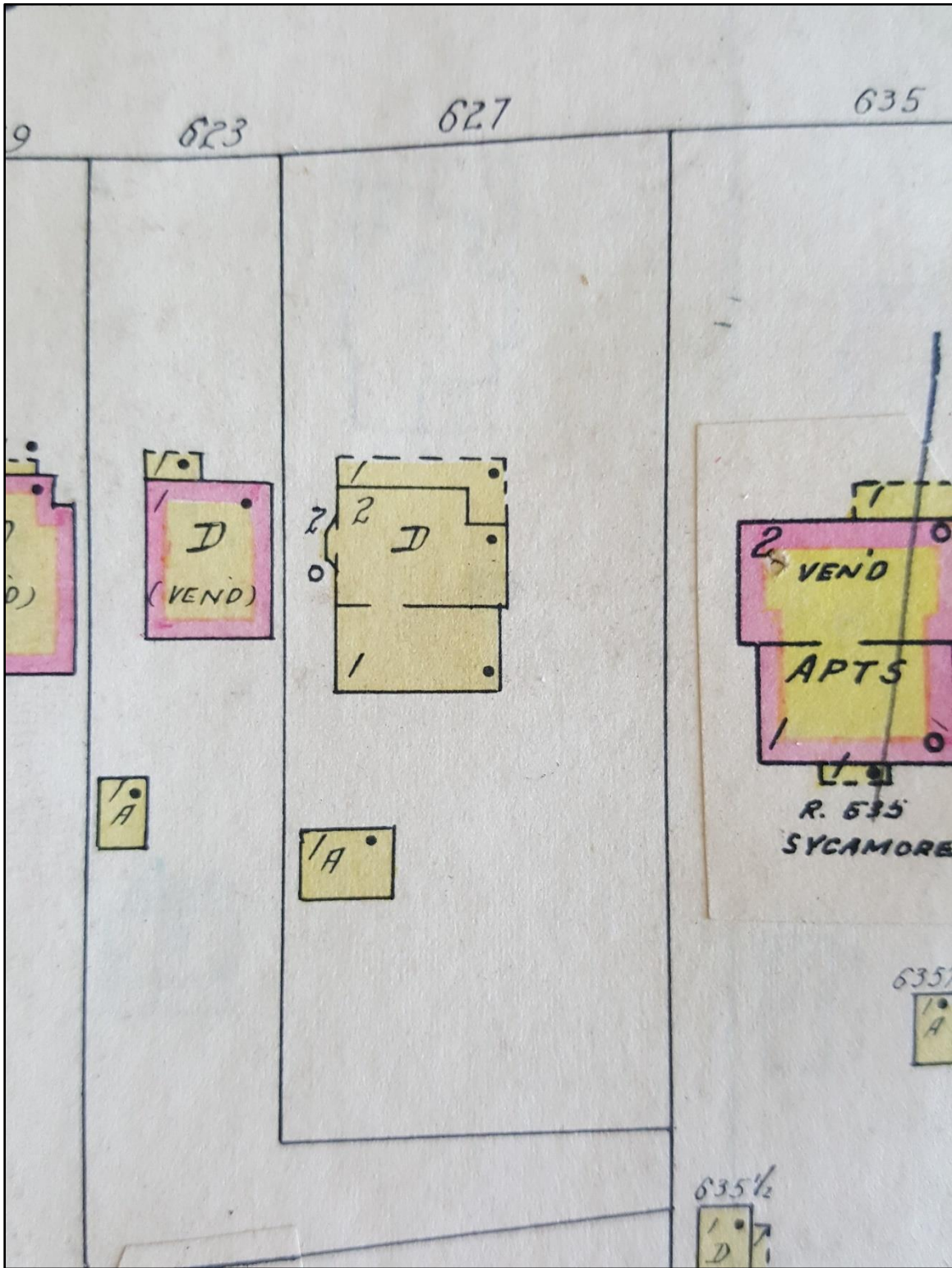
STANDARD OF REVIEW

Section 5.2.3 of the Unified Development Ordinance states material changes shall not be made until an application for a certificate of appropriateness has been approved. The Historic Preservation Commission shall conduct all reviews following The Secretary of the Interior’s *Standards for Rehabilitation* and the design guidelines for each specific district.

STAFF REPORT

- A. Features, elements, and/or issues subject to discussion during the CoA application review should be listed below.
- B. This list does not represent a comprehensive or final list of all aspects that influence the Commission’s decision.
- C. The purpose of this form is to clarify what aspects of a proposal are subject to review and to clearly communicate requirements or recommendations.

Element Feature Subject to Review	As presented, the proposed work is			Comments, Requirements, Recommendations (refer to attachments if needed)
	Acceptable	Possibly Acceptable	Unacceptable	
Gutters to main residence	X			Gutters are a common alteration to residences in historic districts to protect against water infiltration. The gutters should match color.
Gutters to detached garage		X		It is unclear how the gutters will be installed on the detached garage, but they should not conceal architectural elements.



1924 Sanborn Map (updated 1941)

CERTIFICATE OF APPROPRIATENESS

Planning & Zoning
 2635 Talley Street
 Decatur, GA 30030
 Phone 404-377-6198
 Fax 404-378-5054



Completed applications must be submitted, including required support materials, for any material change to a property within a historic district. Applications must be received by 5:00 p.m. no later than 15 calendar days prior to the regular Historic Preservation Commission (HPC) meeting, usually the third Tuesday of each month at 6:30 p.m. Applications heard by the HPC must be approved or denied within 45 days of the filing of the application. Appeals to HPC decisions may be made to the City Commission. All applications are reviewed and processed according to the City of Decatur Unified Development Ordinance Section 5.2 and the individual district design guidelines. Building permits will not be issued without proof of a Certificate of Appropriateness.

Address of property 627 Sycamore Street Decatur, GA 30030

- | | |
|---|---|
| <input type="checkbox"/> McDonough-Adams-Kings Highway District | <input type="checkbox"/> Parkwood Historic District |
| <input type="checkbox"/> Clairemont Avenue Historic District | <input type="checkbox"/> Old DeKalb County Courthouse |
| <input type="checkbox"/> Ponce de Leon Court Historic District | <input type="checkbox"/> Scottish Rite Hospital for Crippled Children |
| <input checked="" type="checkbox"/> Old Decatur Historic District | |

Name of applicant Jerrod Lukacs Email info@intowncontracting.com
 Address 627 Sycamore Street City/state/ZIP Decatur, GA 30030
 Phone 404-725-0381 Cell phone 770-851-1569
 Name of architect/contractor Chad Peck - Intown Contracting
 Phone 404-725-0381 Email info@intowncontracting.com

Brief description of project (example: addition, siding replacement, fence, screen porch, etc.) Install gutters and downpipe on front half of house and detached garage (where none currently exist).

Does this project also require a variance? Yes No

Type of project (check all that apply)

Construction

- New building
- Addition to building
- Accessory building
- Major building restoration
- Minor exterior change
- Other _____

Site changes

- Driveway, sidewalk
- Fence, wall
- Signage
- Demolition or relocation of building
- Healthy tree removal
- Other _____

I hereby certify that the above and attached statements and documents are true to the best of my knowledge and belief.

Applicant signature  Date 02/02/2024

Staff use only

Complete application received by _____ Date _____

ADDENDUM 1 TO CERTIFICATE OF APPROPRIATENESS

Address: 627 Sycamore St., Decatur, GA 30030

Name of Applicant: Jerrod Lukacs

Photos of Existing Conditions:

Front of House:



Front porch roof line and second floor roof line around front of house currently do not have any gutters (see areas circled in red)

Left Side of House:



Front porch roof line, bay window, and second floor roof line around front half of left side of house currently do not have any gutters (see areas circled in red).

First and second floor roof lines around back half of left side of house already have 6" white K-style seamless aluminum gutters and downspouts installed (see areas circled in green).



Front porch roof line, bay window, and second floor roof line around front half of left side of house currently do not have any gutters (see areas circled in red).

First and second floor roof lines around back half of left side of house already have 6" white K-style seamless aluminum gutters and downspouts installed (see areas circled in green).

Right Side of House:



Bay window and second floor roof line around back half of right side of house currently do not have any gutters (see areas highlighted in red).

Back screened-in porch roof line and second floor roof line around back half of right side of house already have 6" white K-style seamless aluminum gutters and downspouts installed (see areas highlighted in green).



Bay window and second floor roof line around back half of right side of house currently do not have any gutters (see areas highlighted in red).

Back screened-in porch roof line and second floor roof line around back half of right side of house already have 6" white K-style seamless aluminum gutters and downspouts installed (see areas highlighted in green).

Detached Garage:



Detached garage roof line currently does not have any gutters (see areas circled in red).



Detached garage roof line currently does not have any gutters (see areas circled in red).

ADDENDUM 2 TO CERTIFICATE OF APPROPRIATENESS

Address: 627 Sycamore St., Decatur, GA 30030

Name of Applicant: Jerrod Lukacs

List of Materials:

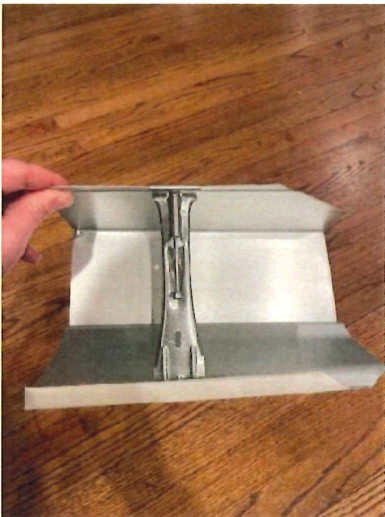
Manufacturer: Spectra Gutter Systems

Product Name/Description: 6" K-style seamless aluminum gutters and downspouts with hidden strap and hanger system; 3"x4" rectangular aluminum downpipe (to mimic style of crown molding fascia and match existing gutters and downpipe on back half of home)

Color: White (to blend in with color of fascia, soffit, and siding and match existing gutters and downpipe on back half of home)

See attached manufacturer product catalog for more details.

Pictures of gutter sample (actual sample submitted with application):



OUR STORY

Founded in St. Petersburg, Florida in 1978 by military veteran, Tom Snell, Sr., Spectra Gutter Systems is celebrating decades of family-owned and operated innovation in the rainware and gutter manufacturing and distribution industry. After moving the corporate headquarters to Atlanta, Georgia in 1992, together with his sons, they transformed Spectra's manufacturing and distribution capabilities from a small regional supplier into the national powerhouse that you know today.

Spectra Gutter Systems is proud to say that our full line of premier aluminum and steel rainware and gutter products are manufactured by us, right here in the U.S.A. This allows us to ensure the highest quality control from our state-of-the-art coil coating, coil processing, stamping, and roll forming lines. Because our manufacturing facilities and customer care locations are strategically located throughout the nation, we have the ability to quickly get you the products that you need to finish your jobs faster.

We pride ourselves on building our business with loyalty, honor, and determination to support you as our business partner and part of our Spectra family. We maintain high standards for our quality and service, while continuing to give back to our country's veterans and our community. We look forward to a long and successful partnership with you.

800-299-5305

spectraguttersystems.com



COLOR TRENDS

TRUECOAT™ Paint System

Spectra Gutter Systems operates multiple U.S. based industrial coating lines, which deliver ASTM A792 certified materials utilizing the TrueCoat™ paint system in partnership with Valspar by Sherwin-Williams, a nationally recognized and respected paint and coatings company. Our TrueCoat™ paint system specializes in providing materials for gutter systems and accessories, as well as specialty building related items for the construction industry.

Sherwin-Williams has been the leader in the paint industry for over 150 years thanks to their integrity, quality, performance, innovation, and growth. The TrueCoat™ paint system brings together the best core base materials and industry processes to deliver a final product you and your customers will be proud of for years to come. Together with our aligned values, we bring you solutions that meet your highest standard.

Our TrueCoat™ paint system includes:

- 20-year paint warranty
- Over 30 colors available for aluminum, galvalume, and copper
- The largest color selection in the marketplace today
- Custom colors and color matching, custom coil slitting, and production coil

AVAILABLE OPTIONS

PAINTED ALUMINUM*



800-299-5305

spectraguttersystems.com

Colors represented as accurately as possible.

For true color representation, please request actual metal samples.

*Other colors are available by special request.





COIL BOBINA

PRODUCT	MATERIAL	QTY	U/M	PART NUMBER
5" Gutter Coil - .027 x 11.75"	Aluminum		LBS	02711__
5" Gutter Coil - .027 x 11.875"	Aluminum		LBS	02711875__
5" Gutter Coil - .032 x 11.75"	Aluminum		LBS	03211__
5" Gutter Coil - .032 x 11.875"	Aluminum		LBS	03211875__
6" Gutter Coil - .027 x 15"	Aluminum		LBS	02715__
6" Gutter Coil - .032 x 15"	Aluminum		LBS	03215__
7" Gutter Coil - .032 x 17.875"	Aluminum		LBS	3217875__
8" Gutter Coil - .032 x 20"	Aluminum		LBS	03220__
Cold Rolled Coil x 11.75", 15" or 18"	Copper		LBS	02111CP, 02115CP, 02118CP
24 Guage x 11.75"	Galvalume		LBS	2411GALVALUME
24 Guage x 15"	Galvalume		LBS	2415GALVALUME
26 Guage x 11.75"	Galvalume		LBS	2611GALVALUME
26 Guage x 15"	Galvalume		LBS	2615GALVALUME
26 Guage x 18"	Galvalume		LBS	26018GALVALUME
CUT TO LENGTH CORTE A LA LONGITUDE				
5" K Gutter	Aluminum, Copper, Galvalume	C-T-L (20 foot max)	FT	5K__
6" K Gutter	Aluminum, Copper, Galvalume	C-T-L (20 foot max)	FT	6K__
7" K Gutter	Aluminum	C-T-L (20 foot max)	FT	7K__
6" Half-Round	Aluminum, Copper, Galvalume	C-T-L (20 foot max)	FT	6HR__

DOWNPIPE TUBO DE BAJADA



PRODUCT	MATERIAL	QTY	U/M	PART NUMBER
2" x 3" Downpipe (8' or 10')	Aluminum, Copper, Galvalume	10 Pieces	Each	3DP8_, 3DP10_
3" x 4" Downpipe (8' or 10')	Aluminum, Copper, Galvalume	10 Pieces	Each	4DP8_, 4DP10_
4" x 5" Downpipe (10')	Aluminum, Copper, Galvalume	6 Pieces	Each	5DP10_
3" Round Downpipe (10')	Aluminum, Copper, Galvalume	8 Pieces	Each	3RDP10_
4" Round Downpipe (10')	Aluminum, Copper, Galvalume	8/5 Pieces	Each	4RDP10_
Direct Flow Flexible Downspout Extensions	Polypropylene	15 Pieces	Each	DFPIPE__



As a military veteran, I highly respect a person's integrity and pride in being a hard worker—two values on which I founded Spectra Gutter Systems. We treat every one of our employees and customers like they are family, and we give back to the communities that we live in whenever we can. I am proud to be a part of a respectable, American-owned and operated company like Spectra. - TOM SNELL, SR., Founder

800-299-5305

spectraguttersystems.com

AMERICAN-MADE PRODUCTS



__ in part number indicates color



ELBOWS CODOS

PRODUCT	MATERIAL	QTY	U/M	PART NUMBER
2" x 3" Elbows (A)	Aluminum, Copper, Galvalume	30 Pieces	Each	3AEL__
2" x 3" Elbows (A Offsets, 2, 3 and 4 Crimp)	Aluminum, Copper, Galvalume	36 Pieces	Each	3AOS#CRIMP__
2" x 3" Elbows (B)	Aluminum, Copper, Galvalume	30 Pieces	Each	3BEL__
2" x 3" Elbows (B Offsets, 4 Crimp)	Aluminum, Copper, Galvalume	36 Pieces	Each	3BOS#CRIMP__
3" x 4" Elbows (A)	Aluminum, Copper, Galvalume	20 Pieces	Each	4AEL__
3" x 4" Elbows (A Offsets, 2, 3 and 4 Crimp)	Aluminum, Copper, Galvalume	30/35 Pieces	Each	4AOS#CRIMP__
3" x 4" Elbows (B)	Aluminum, Copper, Galvalume	20 Pieces	Each	4BEL__
3" x 4" Elbows (B Offsets, 4 Crimp)	Aluminum, Copper, Galvalume	30 Pieces	Each	4BOS#CRIMP__
4" x 5" (A Offsets, 2 and 4 Crimp)	Aluminum, Copper, Galvalume	20 Pieces	Each	5AOS#CRIMP__
4" x 5" Elbows (B)	Aluminum, Copper, Galvalume	25 Pieces	Each	5BEL__
4" x 5" (B Offsets, 4 Crimp)	Aluminum, Copper, Galvalume	25 Pieces	Each	5BOS4__
4" x 5" Elbows (A)	Aluminum, Copper, Galvalume	20/25 Pieces	Each	5AEL__
3" Round Elbows	Aluminum, Copper, Galvalume	20 Pieces	Each	3REL__
3" Round Offsets (2 and 4 Crimp)	Aluminum, Copper, Galvalume	30/35 Pieces	Each	3ROS#CRIMP__
4" Round Elbows	Aluminum, Copper, Galvalume	15 Pieces	Each	4REL__
4" Round Offsets (2 and 4 Crimp)	Aluminum, Copper, Galvalume	30/35 Pieces	Each	4ROS#CRIMP__

PAINTS & SEALANTS PINTURAS Y SELLADORES



PRODUCT	COLOR	QTY	U/M	PART NUMBER
Geocel 2300 or 2320 Sealant (10.5 oz. Cartridge)	Aluminum, Clear, White	24 Tubes	Each	G2300__, G2320__
Geocel 2321 Sealant (5 oz. Squeeze Tube)	Aluminum, Clear, White	24 Tubes	Each	G2321__
Ruscoe 12-1 (10.5 oz. Cartridge)	Clear	24 Tubes	Each	R12-1
Ruscoe High Viscosity Sealer (10.5 oz. Cartridge)	Aluminum, White	24 Tubes	Each	R12-2__
Ruscoe Permanent Sealer (10.5 oz. Cartridge)	Aluminum, White	24 Tubes	Each	R12-3__
Touch-up Paint	All Standard Colors	12 Cans	Each	TUP__

SCREWS & RIVETS TORNILLOS Y REMACHES



PRODUCT	MATERIAL	QTY	U/M	PART NUMBER
Zip Screws #8 x 1/2"	Aluminum, Copper	1000/100 Pieces	Box/Bag	812__
Zip Screws #10 x 1"	Aluminum	1000 Pieces	Box	101H__
Zip Screws #10 x 1-1/2"	Aluminum	1000 Pieces	Box	10112H__
1-1/2" Coated Wood Grip Screws	Aluminum	1000 Pieces	Each	CS11/2
2-1/2" Coated Wood Grip Screws	Aluminum	1000 Pieces	Each	CS21/2
Trim Nails	Stainless Steel	500 Pieces	Box	TN114__
Pop Rivets #42	Aluminum, Copper	100 Pieces/1000	Box	PR42__, PR42__-B
Pop Rivets #44	Aluminum	1000 Pieces	Box	PR44__



HANGERS & FASTENING SYSTEMS GANCHOS



PRODUCT	MATERIAL	QTY	U/M	PART NUMBER
HANGERS				
5" Steel Hidden Hanger with Clip	Stainless Steel	250 Pieces	Each	5SHTHWC
5" Hidden Hanger No Clip	Aluminum	500 Pieces	Each	5HNC
5" Omni Hidden Hanger No Clip / No Screw	Aluminum	500 Pieces	Each	5HNS
6" Omni Hidden Hanger No Clip / No Screw	Aluminum	500 Pieces	Each	6HNS
7" Hidden Hanger No Clip / No Screw	Aluminum, Stainless Steel, Galvanized	400 Pieces	Each	7HNS__
8" Hidden Hanger No Clip / No Screw	Aluminum	100 Pieces	Each	8HNS
5" Ultra Hidden Hanger with Clip	Aluminum	1000 Pieces	Each	5UHW
5" Ultra Hidden Hanger without Clip	Aluminum	1000 Pieces	Each	5UHNC
6" Ultra Hidden Hanger with Clip	Aluminum	1000 Pieces	Each	6UHW
6" Ultra Hidden Hanger without Clip	Aluminum	1000 Pieces	Each	6UHNC
T-Bar Strap	Aluminum	1500 Pieces	Each	TS
5" Hidden Hanger with Screw	Aluminum	500 Pieces	Each	5HFH
6" Hidden Hanger with Screw	Aluminum	350 Pieces	Each	6SSH
7" Hidden Hanger with Screw	Aluminum	100 Pieces	Each	7SSH
5" Elite Hidden Hanger with Screw	Aluminum	500 Pieces	Each	5HFEH
6" Elite Hidden Hanger with Screw	Aluminum	250 Pieces	Each	6HFEH
7" Elite Hidden Hanger with Screw	Aluminum	100 Pieces	Each	7HFEH
5" K Wrap-Around Hanger	Aluminum, Copper	100 Pieces	Each	5WSH__
6" K Wrap-Around Hanger	Aluminum, Copper	100 Pieces	Each	6WSH__
7" K Wrap-Around Hanger	Copper	50 Pieces	Each	7WSHCP
5" Brass Hidden Hanger with Clip	Brass	100 Pieces	Each	5HHBRS
6" Brass Hidden Hanger without Clip	Brass	100 Pieces	Each	6HHBRS
6" Brass Hidden Hanger with Clip	Brass	100 Pieces	Each	6HHBRSWC
5" Snap Fascia Bracket	Aluminum	5 Pieces	Each	5FAB__
BANDS				
3" Block Downpipe Bands	Aluminum	100 Pieces	Each	DPB3__
4" Block Downpipe Bands	Aluminum	100 Pieces	Each	DPB4__
4" Diamond Downpipe Bands	Aluminum, Copper, Galvalume	100 Pieces	Each	DPB__
CLIPS				
3" Downpipe Clips	Aluminum	100 Pieces	Each	3DPCLIP__
4" Downpipe Clips	Aluminum	100 Pieces	Each	4DPCLIP__
FERRULES				
5" Screws with Ferrules	Aluminum	500 Pieces	Each	5FER
6" Screws with Ferrules	Aluminum	500 Pieces	Each	6FER
7" Spikes with Ferrules	Aluminum	500 Pieces	Each	7SPKW
8" Spikes with Ferrules	Aluminum	500 Pieces	Each	8SPKW

800-299-5305

spectraguttersystems.com



GUTTER SYSTEM ACCESSORIES ACCESORIOS DE CANALES



PRODUCT	MATERIAL	QTY	U/M	PART NUMBER
K STYLE END CAPS				
5" Left End Caps	Aluminum, Copper, Galvalume	25/50 Pieces	Each	5ENL__
5" Right End Caps	Aluminum, Copper, Galvalume	25/50 Pieces	Each	5ENR__
6" Left End Caps	Aluminum, Copper, Galvalume	25/50 Pieces	Each	6ENL__
6" Right End Caps	Aluminum, Copper, Galvalume	25/50 Pieces	Each	6ENR__
7" Left End Caps (Limited Colors Available)	Aluminum	50 Pieces	Each	7ENL__
7" Right End Caps (Limited Colors Available)	Aluminum	50 Pieces	Each	7ENR__
8" Left End Caps (Limited Colors Available)	Aluminum	50 Pieces	Each	8ENL__
8" Right End Caps (Limited Colors Available)	Aluminum	50 Pieces	Each	8ENR__
K STYLE OUTLETS				
2" x 3" Rectangular Outlet	Aluminum	50 Pieces	Each	3ROT
3" x 4" Rectangular Outlet	Aluminum	50 Pieces	Each	4ROT
4" x 5" Rectangular Outlet	Aluminum	100 Pieces	Each	5WOTAL
2-3/8" Round Outlet	Aluminum	250 Pieces	Each	238R
2-3/4" Round Outlet	Aluminum	250 Pieces	Each	234R
3-3/8" Round Outlet	Aluminum	100 Pieces	Each	338R
4" Oval Outlet with Flange	Aluminum	50 Pieces	Each	4OVOTF
4" Oval Outlet without Flange	Aluminum, Copper	50 Pieces	Each	4OVOT, 4OVOT__
3" x 4" Snap-in Outlet	Aluminum	100 Pieces	Each	4SSOW
K STYLE MITERS				
5" Inside Box Miter	Aluminum, Copper	20 Pieces	Each	5INM__
5" Outside Box Miter	Aluminum, Copper	20 Pieces	Each	5OTM__
6" Inside Box Miter	Aluminum, Copper	20 Pieces	Each	6INM__
6" Outside Box Miter	Aluminum, Copper	20 Pieces	Each	6OTM__
7" Inside Box Miter (Limited Availability)	Aluminum, Copper, Galvalume	20 Pieces	Each	7INM__
7" Outside Box Miter (Limited Availability)	Aluminum, Copper, Galvalume	20 Pieces	Each	7OTM__
8" Inside Box Miter (White 30° Only)	Aluminum	20 Pieces	Each	8INM3W
8" Outside Box Miter (White 30° Only)	Aluminum	20 Pieces	Each	8OTM3W
5" Inside Strip Miter	Aluminum, Copper	20 Pieces	Each	5ISM__
5" Outside Strip Miter	Aluminum, Copper	20 Pieces	Each	5OSM__
6" Inside Strip Miter	Aluminum, Copper	20 Pieces	Each	6ISM__
6" Outside Strip Miter	Aluminum, Copper	20 Pieces	Each	6OSM__
7" Inside Strip Miter (Limited Availability)	Aluminum, Copper, Galvalume	20 Pieces	Each	7ISM__
7" Outside Strip Miter (Limited Availability)	Aluminum, Copper, Galvalume	20 Pieces	Each	7OSM__
5" Inside Bay Miter	Aluminum, Copper	20 Pieces	Each	5IBS__
5" Outside Bay Miter	Aluminum, Copper	20 Pieces	Each	5OBS__
6" Inside Bay Miter	Aluminum, Copper	20 Pieces	Each	6IBS__
6" Outside Bay Miter	Aluminum, Copper	20 Pieces	Each	6OBS__
7" Inside Bay Miter (Limited Availability)	Aluminum	20 Pieces	Each	7IBS__
7" Outside Bay Miter (Limited Availability)	Aluminum	20 Pieces	Each	7OBS__

AMERICAN-MADE PRODUCTS



__ in part number indicates color

GUTTER PROTECTION PROTECCIÓN DE HOJAS



PRODUCT	MATERIAL	QTY	U/M	PART NUMBER
5" EcoScreen - Drop-in (4')	Aluminum	50 Pieces	Each	GS501LC
6" EcoScreen - Drop-in (4')	Aluminum	50 Pieces	Each	GS502LC
5" EcoLock Fine Mesh (4')	Steel	25 Pieces	Each	GS441FM
6" EcoLock Fine Mesh (4')	Steel	25 Pieces	Each	GS442FM
5" EcoGuard (6')	Aluminum	50 Pieces	Each	5EGBK
6" EcoGuard (6')	Aluminum	50 Pieces	Each	6EGBK
EcoShield for 5" or 6" (5')	Aluminum	20 Pieces	Each	SSHIELD__
5" EcoProShield (4')	Aluminum	15 Pieces	Each	5HOOD__
6" EcoProShield (4')	Aluminum	15 Pieces	Each	6HOOD__

SPECIALTY ITEMS ARTÍCULOS ESPECIALIZADOS



PRODUCT	COLOR	QTY	U/M	PART NUMBER
3" x 4" Conductor Box*	Aluminum, Copper, Galvalume	1 Piece	Each	4CBOX__
4" x 5" Conductor Box*	Aluminum, Copper	1 Piece	Each	5CBOX__
Starter Strip	Aluminum	50 Pieces	Each	VLSS
Starter Strip	Steel	50 Pieces	Each	STSS
Drip Edge 1.875"	Aluminum	50 Pieces	Each	DE1875__
Drip Edge 1-7/8" x 2-1/2" x 10' F4 Style	Aluminum	50 Pieces	Each	DED45__
2" x 3" Gutter Apron	Aluminum	50 Pieces	Each	FLASH__
Splash Blocks	Plastic	10 Pieces	Each	SBLOCK__
Direct Flow Expandable Pipe	Polypropylene	15 Pieces	Each	DFPIPE__
Adapter 4" (Black)	Polypropylene	15 Pieces	Each	DFADABK
TRIM COIL*				
PVC 24" x 50' Trim Coil (.019)	Aluminum	1	Roll	189PVC
Poly 24" x 50' Trim Coil (.019)	Aluminum	1	Roll	280WHITE
Gold Series 24" x 50' Trim Coil (.019)	Aluminum	1	Roll	TC24W265
Double-Sided Colors 24" x 50' Trim Coil (.019)	Aluminum	1	Roll	TC__/_
Trim Nails	Stainless Steel	500 Pieces	Box	TN114__

*Conductor boxes are available in different configurations.

**Trim coil color matching is available upon request.



800-299-5305

spectraguttersystems.com

We're dedicated to supporting our country's veterans by providing job training opportunities within Spectra. We have pride in our work that goes beyond our daily tasks, and we are inspired to make an impact through our talents, passion, and teamwork.

AMERICAN-MADE PRODUCTS



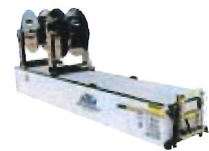
__ in part number indicates color

HALF-ROUND GUTTER SYSTEM SISTEMA DE MEDIO CANAL



PRODUCT	MATERIAL	QTY	U/M	PART NUMBER
6" Half-Round Gutter	Aluminum, Copper, Galvalume	C-T-L (20 foot max)	FT	6HR__
3" Round Downpipe (10')	Aluminum, Copper, Galvalume	6 Pieces	Each	3RDP__10
4" Round Downpipe (10')	Aluminum, Copper, Galvalume	8/5 Pieces	Each	4RD__10
3" Round Elbows	Aluminum, Copper, Galvalume	20 Pieces	Each	3REL__
4" Round Elbows	Aluminum, Copper, Galvalume	15 Pieces	Each	4REL__
3" Half-Round Outlet	Aluminum	50 Pieces	Each	3HROT
4" Half-Round Outlet	Aluminum, Copper, Galvalume	50 Pieces	Each	4HROTW
6" Half-Round End Caps	Aluminum, Copper	50 Pieces	Each	6HREN__
#11, #12 & #30 Shanks	Aluminum, Copper, Galvalume	50 Pieces	Each	#SHANK
6" Half-Round Hanger with Clip	Aluminum, Stainless Steel, Galvanized	100 Pieces	Box	6HRHH__
6" Half-Round Hanger with Clip and Screw	Aluminum	100 Pieces	Each	6HRHH__WS
6" Stamped Half-Round Hanger (Facia Mount)	Aluminum, Copper, Galvanized	50 Pieces	Each	6HS__
6" Wrap-Around Half-Round Hanger	Aluminum, Copper, Galvalume	50 Pieces	Each	6HRWH__
6" Half-Round Box Miter	Aluminum, Copper	1 Piece	Each	6HRINM, 6HROTM
6" Half-Round Inside/Outside Strip	Aluminum, Copper, Galvalume	20 Pieces	Each	6HROSM__, 6HRISM__
6" Half-Round Box Inside/Outside Miter	Aluminum, Copper, Galvalume	20 Pieces	Each	6HRINM__, 6HROTM__
6" Half-Round Inside/Outside Bay Miter	Aluminum, Copper, Galvalume	20 Pieces	Each	6HRIBS__, 6HROBS__
6" Drop-in Screen	Copper	25 Pieces	Each	GS432
6" Half-Round Hinged Screen	Aluminum, Copper	50/25 Pieces	Each	GS632, GS642

TOOLS & EQUIPMENT* HERRAMIENTOS Y EQUIPO*



PRODUCT	INCLUDES	PART NUMBER
5" Iron Man	Includes 1 Shear, IronMan 5	Each
6" Iron Man	Includes 1 Shear, IronMan 6	Each
7" Iron Man	Includes 1 Shear, Ironman 7	Each
6" Half-Round Iron Man	Includes 1 Shear, Iron Man 6 HR	Each

*Other equipment available by special order

800-299-5305

spectraguttersystems.com